

Unity Desktop Client - Quick Start User Guide

Step 1

Install Unity from the accompanying installation file

Step 2

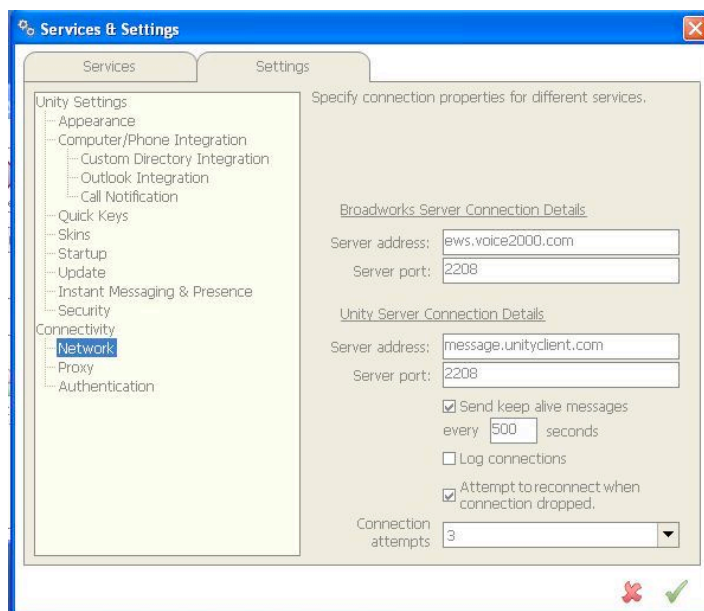
When starting Unity for the first time you will receive the following message:



Click OK

Step 3

Enter the 01 Telecom server address and port number:



Server Address: **ews.voice2000.com**

Server Port: **2208**

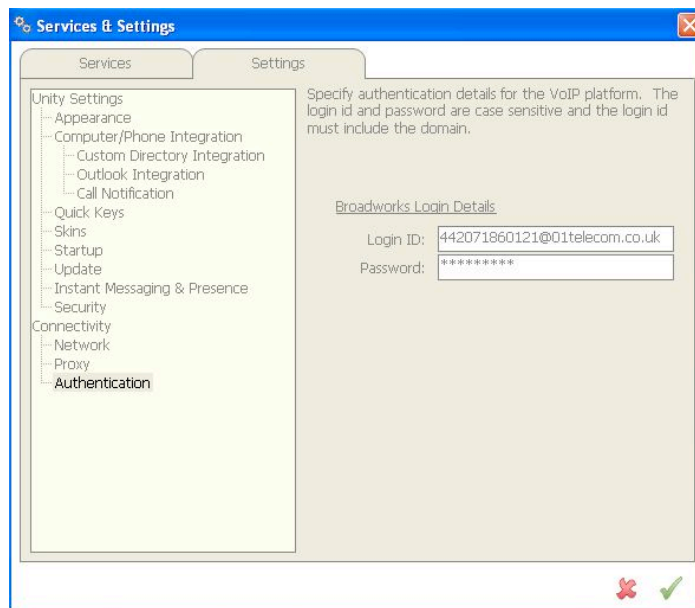
Server Address: **message.unityclient.com**

Server Port: **2208**

Step 4

Click Authentication in the left window.

Enter your 01 Telecom Username and Password. These are the same login credentials you would use to access the 01 Telecom Nimbus provisioning portal.

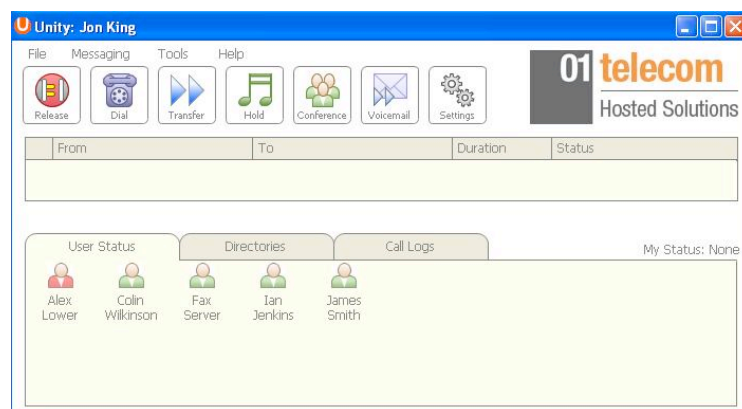


Username: **your user ID**

Password: **your password**

Step 5

Click the green tick in the bottom right hand corner. Unity will now login to the 01 Telecom network.



Streamline Your Communications with 01 Telecom Hosted PBX. To find out how 01 Telecom can bring enhanced communications services to your business, go to www.01telecom.co.uk or call 0207 186 0101.